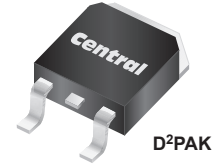


CSHDD16-40C | CSHDD16-100C CSHDD16-60C | CSHDD16-200C

16A, 40V thru 200V Dual, Common Cathode Schottky Rectifiers in the D²PAK package



Central Semiconductor's **CSHDD16-40C** series of 16 amp Schottky rectifiers is designed for a wide range of applications requiring high current capability and low forward voltage drop.

Features:

- Low forward voltage
- High current capability
- High surge capacity
- Low power loss, high efficiency
- High voltage

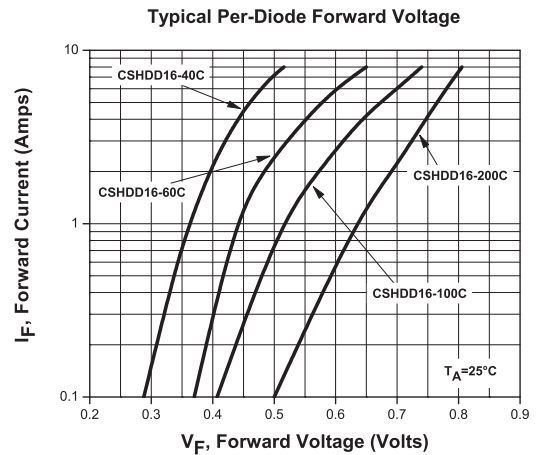
Applications:

- DC-DC output rectification
- Solar by-pass diode
- OR-ing diodes
- Polarity protection

Benefits:

- Energy efficiency
- Low total conduction losses
- Industry standard package/footprint

Typical Electrical Characteristics



Samples:



To order samples of these devices visit:
www.centrasemi.com/info/CSHDD16

weblink scan

Use QR reader for direct link to product web page.

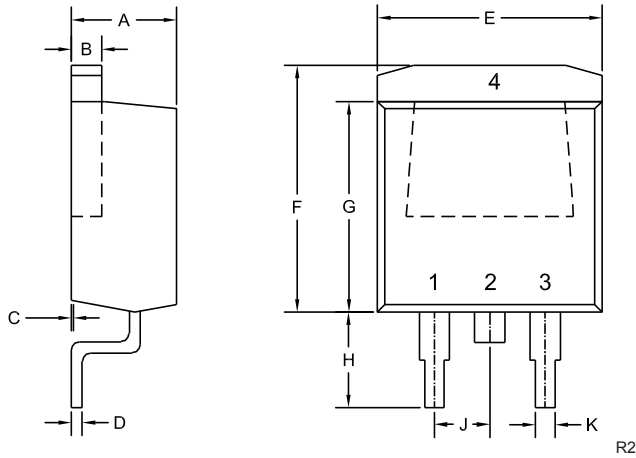


	Maximum Ratings (T _A = 25°C)				Electrical Characteristics Per Rectifier: (T _A = 25°C unless otherwise noted)				
	V _{RRM} (V) MAX	I _O T _C = 75°C (A) MAX	T _J , T _{stg} (°C) MAX	I _{FSM} (A) MAX	V _F		@ I _F (A)	I _R *T _C = 100°C MAX	@ V _R (V)
					(V) TYP	(V) MAX			
CSHDD16-40C	40	16	-65 to +175	150	0.52 –	0.7 0.84	8.0 16	50µA *20mA	40 40
CSHDD16-60C	60	16	-65 to +175	150	0.65 –	0.75 0.95	8.0 16	50µA *20mA	60 60
CSHDD16-100C	100	16	-65 to +175	150	0.75 –	0.8 1.1	8.0 16	50µA *20mA	100 100
CSHDD16-200C	200	16	-65 to +175	150	0.80 –	0.9 1.2	8.0 16	50µA *20mA	200 200

CSHDD16-40C | CSHDD16-100C CSHDD16-60C | CSHDD16-200C

16A, 40V thru 200V Dual, Common Cathode Schottky Rectifiers in the D²PAK package

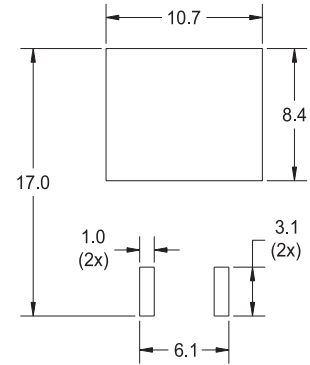
Mechanical Drawing - D²PAK



SYMBOL	INCHES		MILLIMETERS	
	MIN	MAX	MIN	MAX
A	0.163	0.189	4.14	4.80
B	0.045	0.055	1.14	1.40
C	0.000	0.010	0.00	0.25
D	0.012	0.028	0.30	0.70
E	0.386	0.409	9.80	10.40
F	0.378	0.417	9.60	10.60
G	0.335	0.358	8.50	9.10
H	0.197	0.236	5.00	6.00
J	0.093	0.108	2.35	2.75
K	0.030	0.035	0.75	0.90

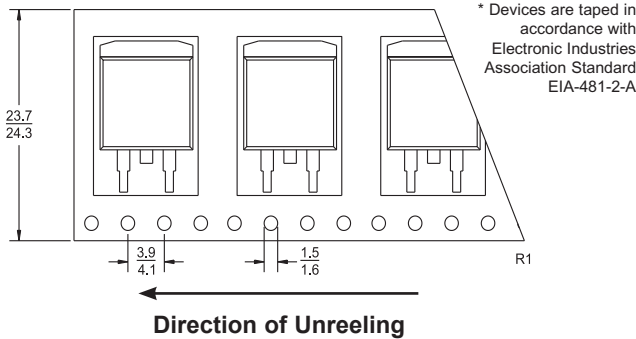
D2PAK (REV: R2)

Mounting Pad Geometry (Dimensions in mm)



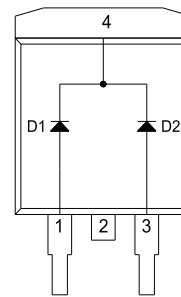
Tape Dimensions and Orientation (Dimensions in mm)

Tape Width: 24mm



* Devices are taped in accordance with Electronic Industries Association Standard EIA-481-2-A

Pinout



Lead Code:

- 1) Anode D1
- 2) Cathode D1, D2
- 3) Anode D2
- 4) Cathode D1, D2

Note: Pin 2 is Common to the Tab (4)

Marking:
Full Part Number

Packaging Base / Ordering Information

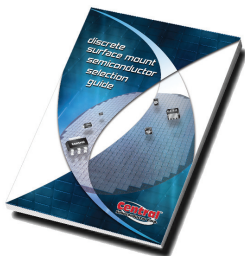
Reel Size	Quantity	Central Item No.
13"	800 pcs.	CSHDD16-40C TR13
		CSHDD16-60C TR13
		CSHDD16-100C TR13
		CSHDD16-200C TR13

Reel Packing Information

Reel Size	Reels per Box (Maximum)	Parts per Box (Maximum)	Box Dimensions		Shipping Weight (Max.)	
			INCH	CM	LB	KG
13"	3	2,400	15x4x15	38x10x38	12	6
	7	5,600	15x15x9	38x38x23	28	13
	14	11,200	15x15x18	38x38x46	55	25

Sample devices available upon request. To order samples of this device visit: www.centrasemi.com/info/CSHDD16

Literature



New
SMD SELECTION GUIDE

Stay up to date on Central's latest new products:

Subscribe to Central's
eNewsletter



www.centrasemi.com/subscribe

Order your selection guide today.
Visit: web.centrasemi.com/search/sample.php

Central™ Innovative Discrete
Semiconductor Corp. Semiconductors

For further information contact:
Sales at Central Semiconductor Corp.
(631) 435-1110 or visit:
www.centrasemi.com