

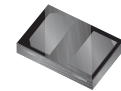
CFSH01-30L

30V, 100mA Low V_F Schottky Diode in the ultra miniature SOD-882L package

SOD-882L



Top View



Bottom View

The Central Semiconductor CFSH01-30L is a high quality Schottky diode designed for applications where ultra small size and low forward voltage are prime requirements. Packaged in a Tiny Leadless Package™ (TLP™), this component provides performance characteristics optimized for logic level applications where board space is at a premium.

Features:

- Current ($I_O = 100\text{mA}$)
- Low forward voltage drop ($V_F = 0.30\text{V TYP @ } 10\text{mA}$)
- Low leakage current ($I_R = 800\text{nA TYP @ } 3.3\text{V}$)

Applications:

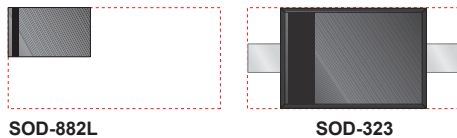
- DC-DC conversion
- Voltage clamping
- Circuit protection
- Battery power management

Benefits:

- Energy efficiency
- Space saving low profile package

Package Size and Comparison:

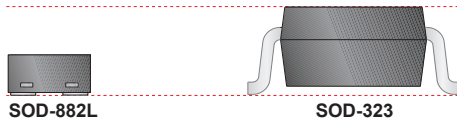
The SOD-882L utilizes **81%** less board space than the SOD-323



SOD-882L

SOD-323

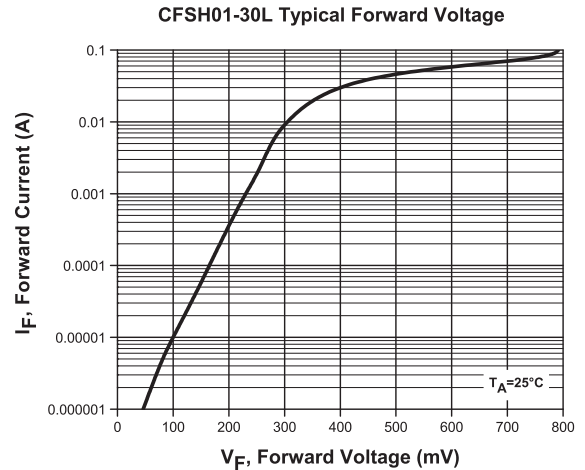
The SOD-882L has a **60%** lower profile than the SOD-323



SOD-882L

SOD-323

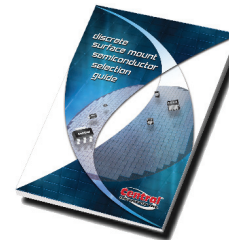
Typical Electrical Characteristics



Samples and Literature



To order samples of this device visit:
www.centalsemi.com/info/CFSH01-30L



New
SMD
SELECTION
GUIDE

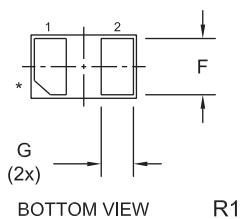
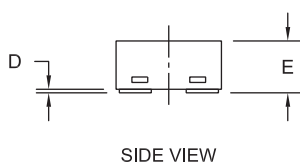
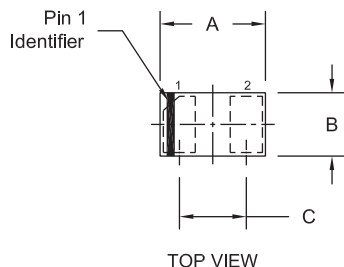
Order your selection guide today.
 Visit: web.centalsemi.com/search/sample.php

Electrical Characteristics ($T_A = 25^\circ\text{C}$ unless otherwise noted)								Thermal Characteristics				
V_{RRM}	I_O	V_F		@ I_F	I_R		@ V_R	C_T	P_D	T_J	T_{stg}	Θ_{JA}
(V) MAX	(mA) MAX	(V) TYP	(V) MAX		TYP	(μA) MAX	(V)	(pF) TYP	(mW) MAX	($^\circ\text{C}$) MAX	($^\circ\text{C}$) MAX	($^\circ\text{C/W}$) MAX
30	100	0.07 0.3	0.095 0.37	5.0 μA 10mA	800nA 1.3 μA	2.0 7.0	3.3 10	7.0	100	-65 to +125	-65 to +150	1,000

CFSH01-30L

30V, 100mA Low V_F Schottky Diode in the ultra miniature SOD-882L package

Mechanical Drawing - SOD-882L



SYMBOL	DIMENSIONS			
	INCHES		MILLIMETERS	
	MIN	MAX	MIN	MAX
A	0.037	0.041	0.95	1.05
B	0.022	0.026	0.55	0.65
C	0.026		0.65	
D	0.000	0.002	0.00	0.05
E	0.012	0.016	0.30	0.40
F	0.018	0.022	0.45	0.55
G	0.008	0.012	0.20	0.30

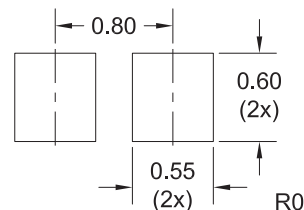
SOD-882L (REV:R1)

Lead Code:

- 1) Cathode
- 2) Anode

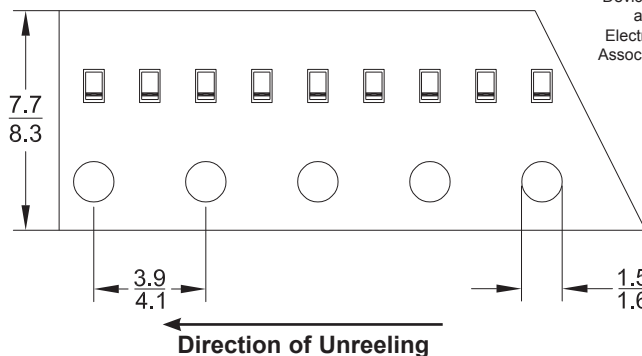
Marking Code: T

Mounting Pad Geometry (Dimensions in mm)



Tape Dimensions and Orientation (Dimensions in mm)

Tape Width: 8mm



* Devices are taped in accordance with Electronic Industries Association Standard EIA-481-1-A

Packaging Base

7" Reel = 8,000 pcs.

Reel Packing Information

Reel Size	Reels per Box (Maximum)	Parts per Box (Maximum)	Box Dimensions		Shipping Weight (Max.)	
			INCH	CM	LB	KG
7"	9	72,000	9x9x5	23x23x13	3	2
	18	144,000	9x9x9	23x23x23	6	3
	40	320,000	21x9x9	53x23x23	13	6
	108	864,000	27x9x17	69x23x43	34	16

Sample devices available upon request. To order samples of this device visit: www.centralsemi.com/info/CFSH01-30L



Innovative Discrete
Semiconductors

For further information contact:
Sales at Central Semiconductor Corp.
(631) 435-1110 or visit:
www.centralsemi.com